

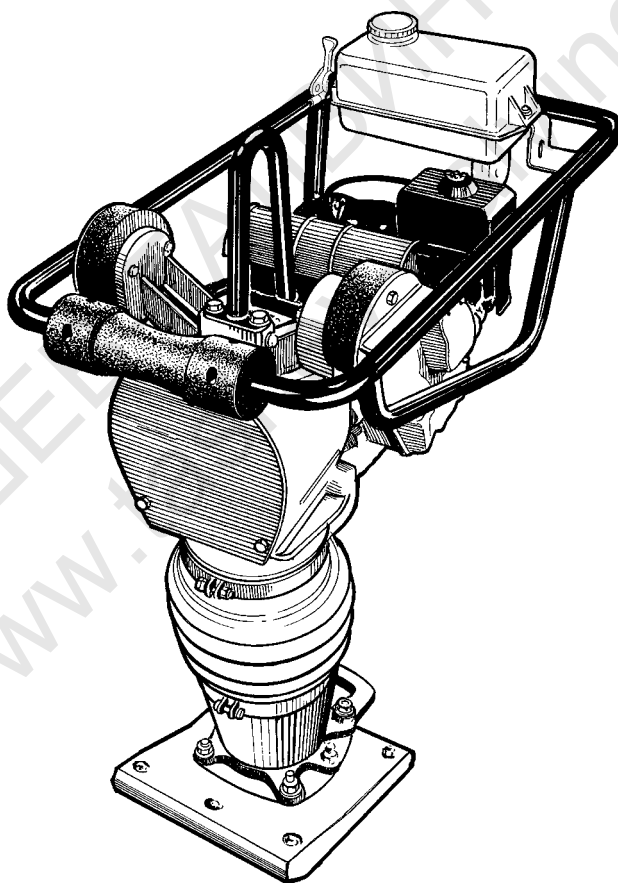
TREMIX

Rammer

MS620

SPARE PARTS CATALOGUE

SMS620-2EN1



TREMIX®

Nordic Construction Equipment AB
Stensättravägen 9, Box226
SE- 127 24 Skärholmen, Sweden
Tel: +46 8 603 32 00 Telefax: +46 8 646 72 61

Rammer MS 620 Spare Parts Catalogue

SMS620 -2EN1

Valid from serial number:

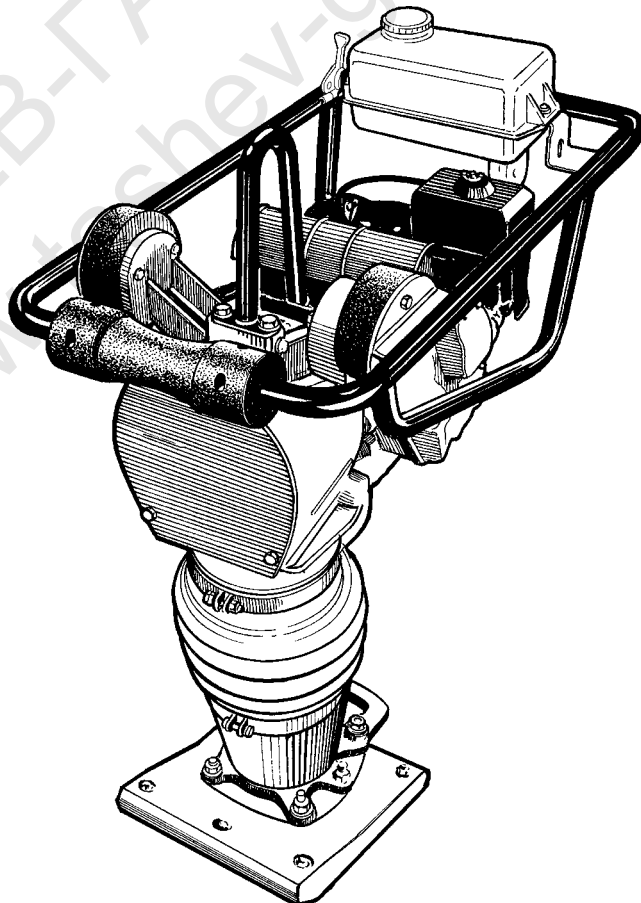
MS620 *76002747 - *

Engines:

Honda GX100

Published catalogue issues valid for these rammers:

Catalogue	Issue date	Valid for serial numbers
SMS620-1EN1	2002-02	Replaced by SMS620-1EN2
SMS620-1EN2	2004-10	Replaced by SMS620-1EN3
SMS620-1EN3	2005-07	Replaced by SMS620-2EN1
SMS620-2EN1	2006-10	



RESERVDELSBESTÄLLNING

Följande uppgifter ska lämnas vid beställning av reservdelar för att undvika leveransfel:

1. Maskintyp.
2. Vältens serienummer.
3. Antal av önskad reservdel.
4. Reserdelens artikelnummer.
5. Reservdelens benämning.
6. Måttuppgifter vid beställning av metervera.

ERSATZTEILBESTELLUNG

Zur Vermeidung von Fehllieferungen sind bei der Bestellung von Ersatzteilen folgende Angaben zu machen:

1. Maschinentyp.
2. Herstellungsnummer.
3. Bestellmenge. (Quantity)
4. Ersatzteilnummer. (Part N°)
5. Ersatzteilbenennung. (Denomination)
6. Massangaben bei Bestellung von Meterware.

PEDIDO DE RECAMBIOS

Para evitar errores en las entregas, deberán indicarse los siguientes datos al hacer un pedido de recambios:

1. Tipo de máquina.
2. Número de serie.
3. Cantidad de piezas deseadas. (Quantity)
4. Número de artículo de la pieza de recambio. (Part N°)
5. Denominación de la pieza. (Denomination)
6. Indíquese la medida al solicitar un artículo que se expide por metros.

ORDERING SPARE PARTS

To avoid errors in delivery, please give the following information when ordering spare parts:

1. Type of machine.
2. Roller serial number.
3. Quantity required.
4. Part number.
5. Parts denomination.
6. Dimensions when ordering per length.

ORDINI DI RICAMBI

Perevitare errori nelle consegne di ricambi, Vi preghiamo di comunicarci le seguenti informazioni al momento dell'ordinazione:

1. Tipo di macchina.
2. Numero di serie della macchina.
3. Quantità dei pezzi desiderati. (Quantity)
4. Numero di codice del pezzo. (Part N°)
5. Descrizione del pezzo di ricambio. (Denomination)
6. Misura, in caso di ordine per metro.

COMMANDE DE PIÈCES DE RECHANGE

Les indications suivantes doivent être fournies lors de la commande de pièces de rechange, afin d'éviter toute erreur de livraison:

1. Type de machine.
2. Numéro de série.
3. Quantité désirée de pièce de rechange. (Quantity)
4. Numéro de la pièce de rechange. (Part N°)
5. Dénomination de la pièce de rechange. (Denomination)
6. Longueur en cas de commande au mètre.

YOUR AGENT/DEALER:

Text pages

The text pages is structured as the picture on the right.

1. This is the remarks for specific items and the descriptions of the remarks is at the bottom of the parts list.

2. Parts indicated by a dot and moved to the right are included when buying the assembled unit above.

TREMIX®					
Cooling system					
Ref. No.	Part No.	Rem.	Qty	Description	Code
1	223047		1	Water cooler	C
2	935852		1	Radiator cap	D
3	935851	①	1	Cock	
4	373263	A	1	Radiator hose	D
5	313009		6	Clamp	
6	205058	B	1XL	Rubber cloth	
7	373261	C	1	Radiator hose	D
8			1	Oil cooler	D
9	223289		1	Plate	
10	902166	D	1XL	Edge trim	
11	223287	E	1	Holder	
12	223288	F	1	Holder	
13	908168		1	Fan guard	
14	908170		1	Fan shroud	
15	908171		2	Mounting bar	
16	908169		1	Fan guard	
17	500021		14	Screw	
18	902286		14	Nut	
19	600006		14	Washer	
20	313102		2	Cable strap	

A) Upper
 B) L=060MM
 C) Lower
 D) L=2280MM
 E) Left
 F) Right

Changes

PARTS INFO	SERVICE INFO	GROUP	PAGE	NOTES

Notes

PÄRMETIKETT

För att undvika fel vid reservdelsbeställning finns här nedan två etiketter som passar i fickorna på pärmarnas ryggar. På dessa kan man se från vilket vältnummer av aktuell maskin reservdelskatalogen gäller. Gör så här:

1. Tag denna sida ur pärmern.
2. Klipp ut etiketten till **VÄNSTER** (1) och sätt in den i fickan på **DENNA** pärmens rygg.
3. Finns det en etikett till **HÖGER** (2), kan denna användas på pärmern för **FÖREGÅENDE** utgåva av denna katalog.
4. Kasta detta papper.

KATALOG-BESCHRIFTUNG

Zur Vermeidung von Fehlern bei der Ersatzteilbestellung benutzen Sie bitte die unteren Beschriftungen, um die Kataloge auf der Rückseite zu kennzeichnen. Auf der Beschriftung ist angegeben, für welche Maschinennummern der jeweilige Katalog gültig ist. Ablauf:

1. Nehmen Sie dieses Blatt aus dem Katalog.
2. Schneiden Sie die **LINKE** Beschriftung (1) aus. Schieben Sie die Beschriftung in die tasche auf **DEM** Katalogrücke.
3. Sollte die Beschriftung unten **RECHTS** (2) mitgeliefert werden, kennzeichnen Sie damit bitte die **ÄLTERE** Ausführung dieses Kataloges.
4. Den Rest dieses Blattes bitte vernichten.

ETIQUETA PARA LA CARPETA

Para evitar errores al pedir repuestos utilicen las etiquetas abajo descritas para identificar los catálogos en la parte trasera de la carpeta. En la etiqueta se ven los números de referencia de la serie para la cual es válido el catálogo. Instrucciones:

1. Quitar esta página de la carpeta.
2. Corta la etiqueta **IZQUIERDA** (1) y ponerla est **ESTA** carpeta en la parte trasera.
3. Si hay una etiqueta en la parte **DERECHA** (2) se puede utilizar en la carpeta para el catálogo que **PRECEDE** a esta.
4. Tirar esta hoja.

BINDER LABEL

To avoid errors when ordering spare parts use the labels below to identify the catalogues on the back of the binder. The label contain the serial number range for which the catalogue is valid. Do like this:

1. Remove this page from the binder.
2. Cut out the **LEFT** label (1) and put it on **THIS** binders back.
3. If there is a label to the **RIGHT** (2), it can be used on the binder for **PRECEDING** issue of this catalogue.
4. Throw away this paper.

ETICHETTA POSTA SUL RACCOGLITORE

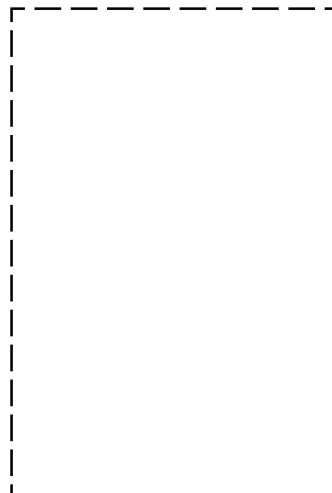
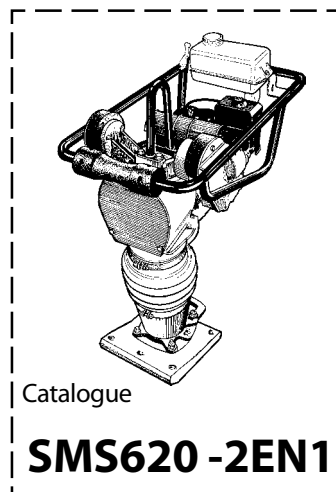
Per evitare errori quando ordinate pezzi di ricambio, usate le etichette in calce che servono ad identificare i cataloghi sul retro del raccoglitore. L'etichetta indica il numero di matricola delle macchine prese in considerazione nel catalogo.

1. Rimuovete questa pagina dal raccoglitore.
2. Ritagliate l'etichetta posta a **SINISTRA** (1) e ponetela sul retro **DEL** raccoglitore.
3. Se trovate anche un'etichetta sulla **DESTRA** (2), ritagliatela e ponetela sul raccoglitore relativo alla **PRECEDENTE** edizione del catalogo.
4. Distruggete questo foglio.

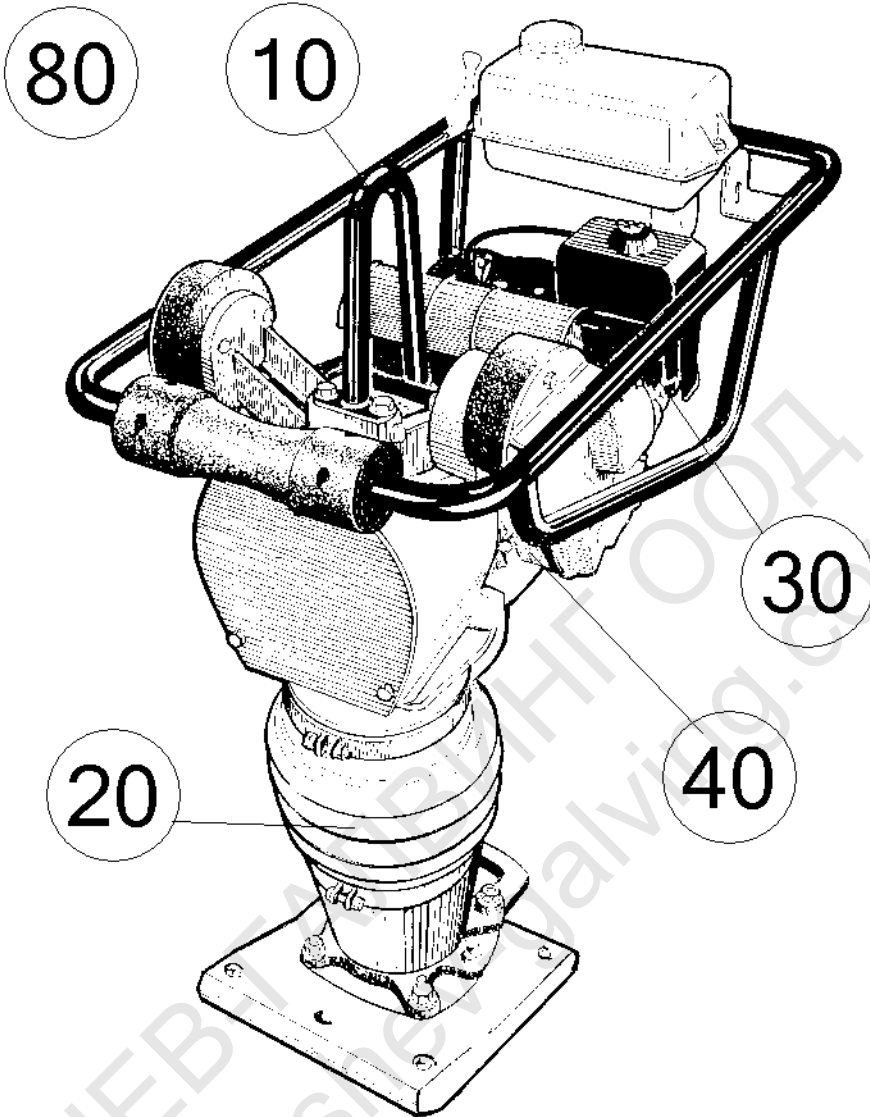
ETIQUETAGE DU CATALOGUE

Afin d'éviter des erreurs lors de commandes de pièces de rechange, nous vous conseillons d'apposer les marquages ci-dessous à l'arrière du classeur, pour identifier les catalogues. Ce marquage indique les numéros de série pour lesquels le catalogue est adapté. Il convient de procéder de la façon suivante:

1. Retirez cette page du classeur.
2. Découpez l'étiquette de **GAUCHE** (1), et apposez-la à l'arrière de **CE** catalogue.
3. Si il y a une étiquette à **DROITE** (2), vous pourrez l'apposer sur le classeur de l'edition **PRECEDENTE** du catalogue.
4. Détruire cetta feuille.



MS620 From S/N: 76002747	2
Handle	4
Handle	6
Ramming system	8
Transmission	10
Spring unit	12
Foot 9 "	14
Foot 11"	16
Option, extended foot	18
Engine and fuelsystem	20
Engine Honda GX100	22
Diaphragm carburettor installation for GX100	24
Diaphragm carburettor with primer pump, installation for GX100	26
Fuel system	28
Power transmission	30
Engine installation	32
Centrifugal clutch	34
Decals and documentation	36
Decals and documentation	38



Ref. No.	Part No.	Rem. Qty	Description	Code
10			Handle (Page 4)	
20			Ramming system (Page 8)	
30			Engine and fuelsystem (Page 20)	
40			Power transmission (Page 30)	
80			Decals and documentation (Page 36)	

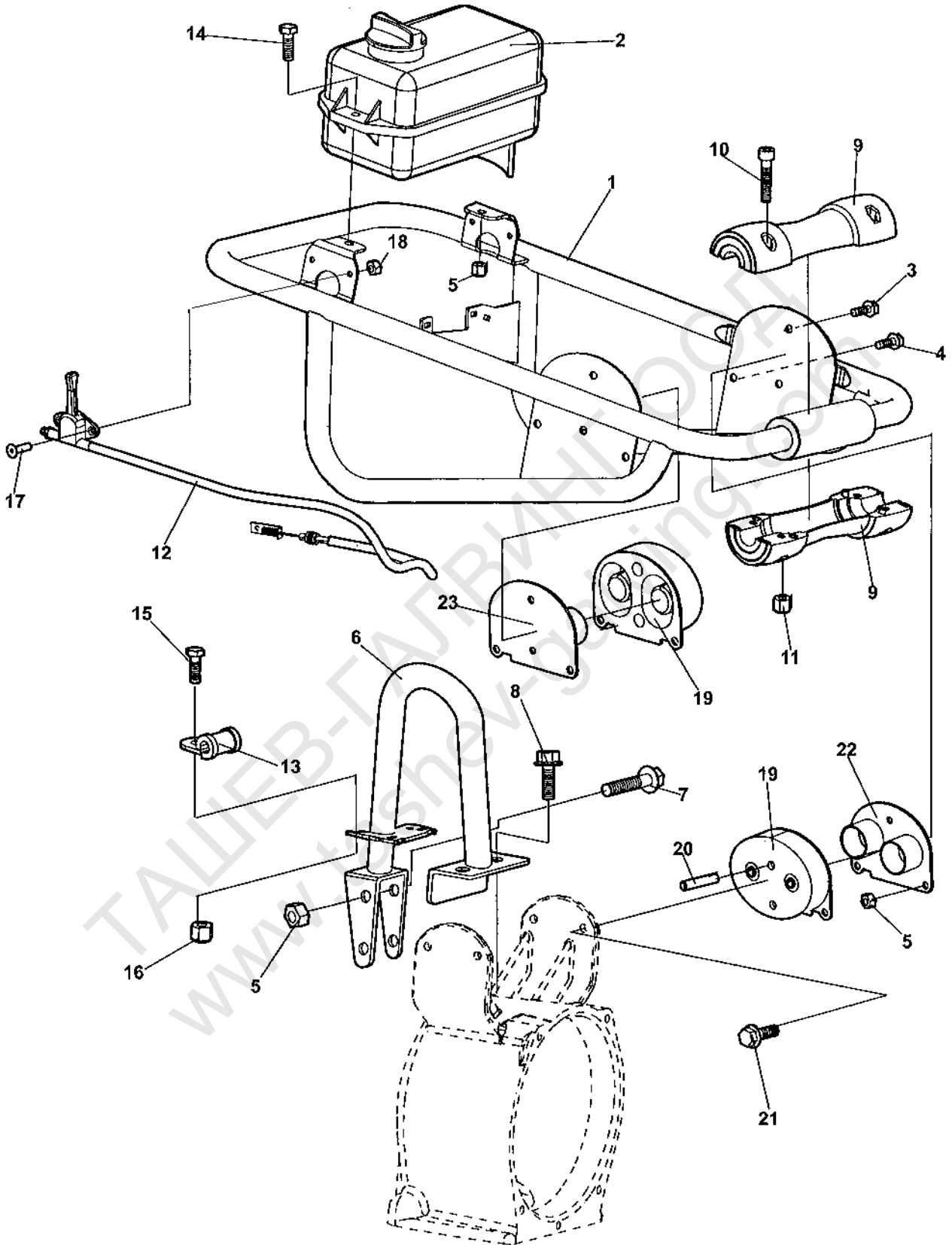
ТАШЕВ-ГАЛВИНГ ООД
www.tashev-galving.com

ТАШЕВ-ГАЛВИНГ ООД
www.tashev-galving.com

Handle

Ref. No.	Part No.	Rem. Qty	Description	Code
10		1	Handle (Page 6)	

ТАШЕВ-ГАЛВИНГ ООД
www.tashev-galving.com



Handle

Ref. No.	Part No.	Rem.	Qty	Description	Code
1	378043		1	Handle	
2		A	1	Fuel tank, cpl	
3	500505		4	Screw M8x20 8.8	
4	902041		4	Screw	
5	902286		8	Lock nut M8	
6	385439		1	Lifting lug	
7	791344		2	Screw	
8	791343		2	Screw	
9	384496		4	Roller	
10	508018		4	Screw	
11	586002		4	Lock nut M6	
12	385006		2	Throttle control, cpl	
13	791388		1	Clamp	
14	500506		2	Screw	
15	500501		1	Screw	
16	902285		1	Lock nut M6	
17	904504		2	Screw M5 x 18	
18	902284		2	Nut M5	
19	386785		2	Shock absorber	
20	791323		4	Cylindrical pin	
21	500506		4	Screw	
22	386786		1	Angle stop left side	
23	386787		1	Angle stop right side	
33			1		

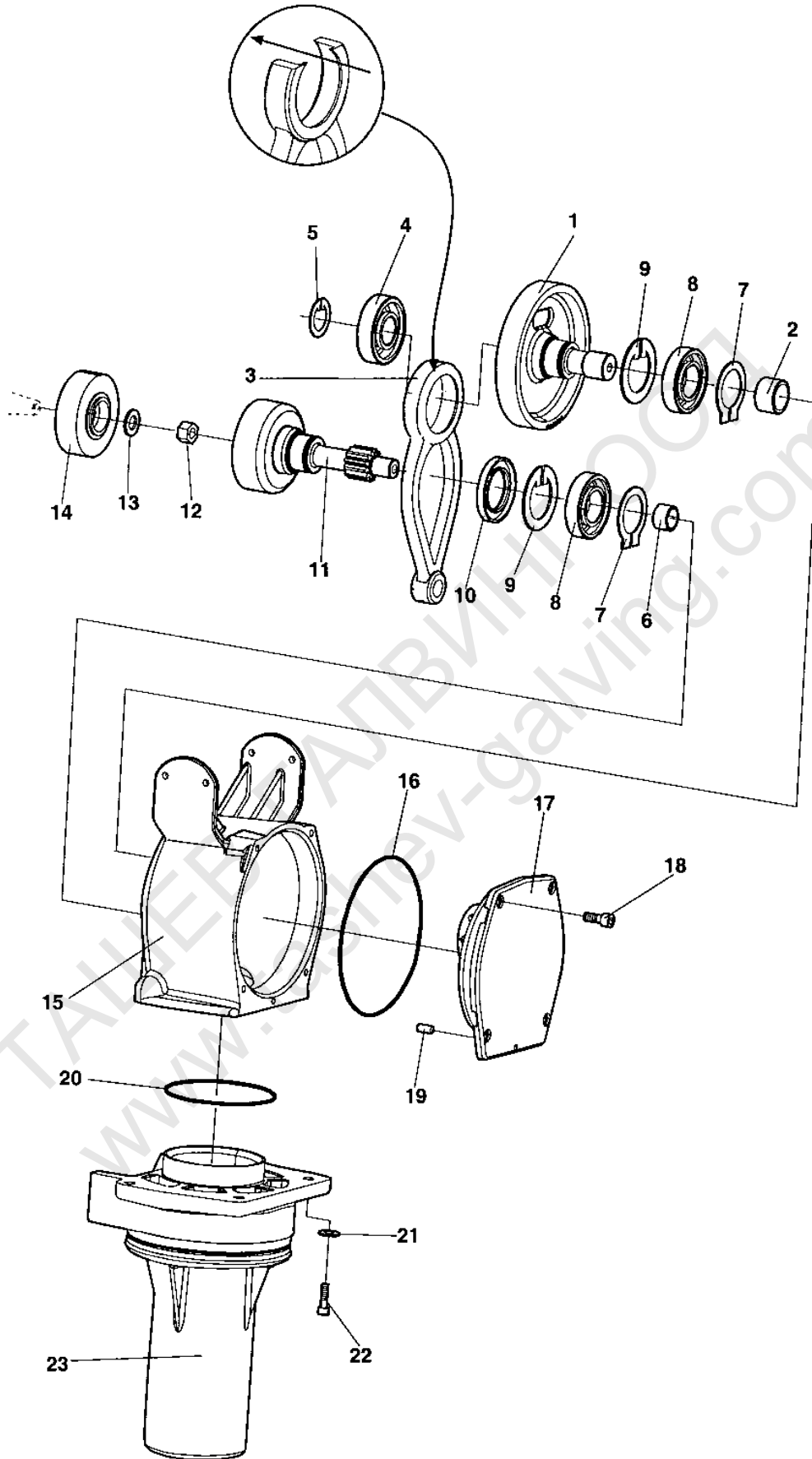
A) See section fuelsystem

ТАШЕВ-ГАЛВИНГ ООД
www.tashev-galving.com

Ramming system

Ref. No.	Part No.	Rem. Qty	Description	Code
10			Transmission (Page 10)	
20			Spring unit (Page 12)	
30			Foot 9 " (Page 14)	
40			Foot 11" (Page 16)	
50			Option, extended foot (Page 18)	

ТАШЕВ-ГАЛВИНГ ООД
www.tashev-galving.com

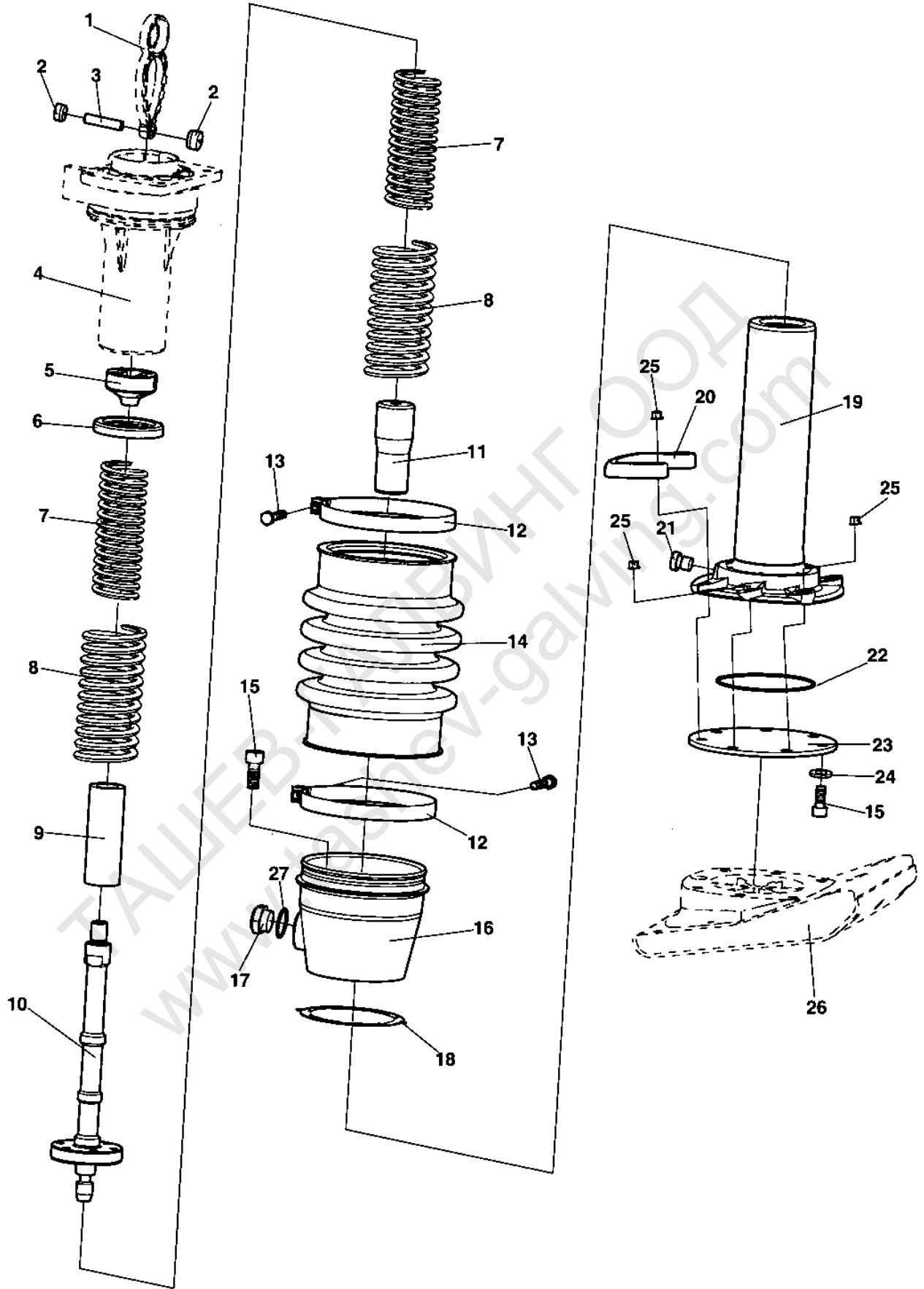


Transmission

Ref. No.	Part No.	Rem.	Qty	Description	Code
1	380906		1	Gear wheel	
2	904950		1	Needle bearing	
3	380920		1	Connecting rod	
4	111078		1	Ball bearing	
5	150009		1	Snap ring	
6	904949		1	Needle bearing	
7	150014		2	Snap ring	D
8	903520		2	Bearing	
9	151025		2	Snap ring	
10	904952		1	Sealing	
11	381477		1	Shaft	
12		A	1	Nut	
13		A	1	Washer	
14		A	1	Clutch	
15	388403		1	Crankcase	
16	160106		1	O-ring	
17	377332		1	Cover	
18	508096		4	Screw M10-1,5x25H 8,8	
19	628006		1	Pin	
20	160035		1	O-ring	
21	904230		4	Washer 10,5x22x2	
22	508053		4	Screw M10-1,5x35H 8,8	
23	388407		1	Outer tube	

A) See section power transmission

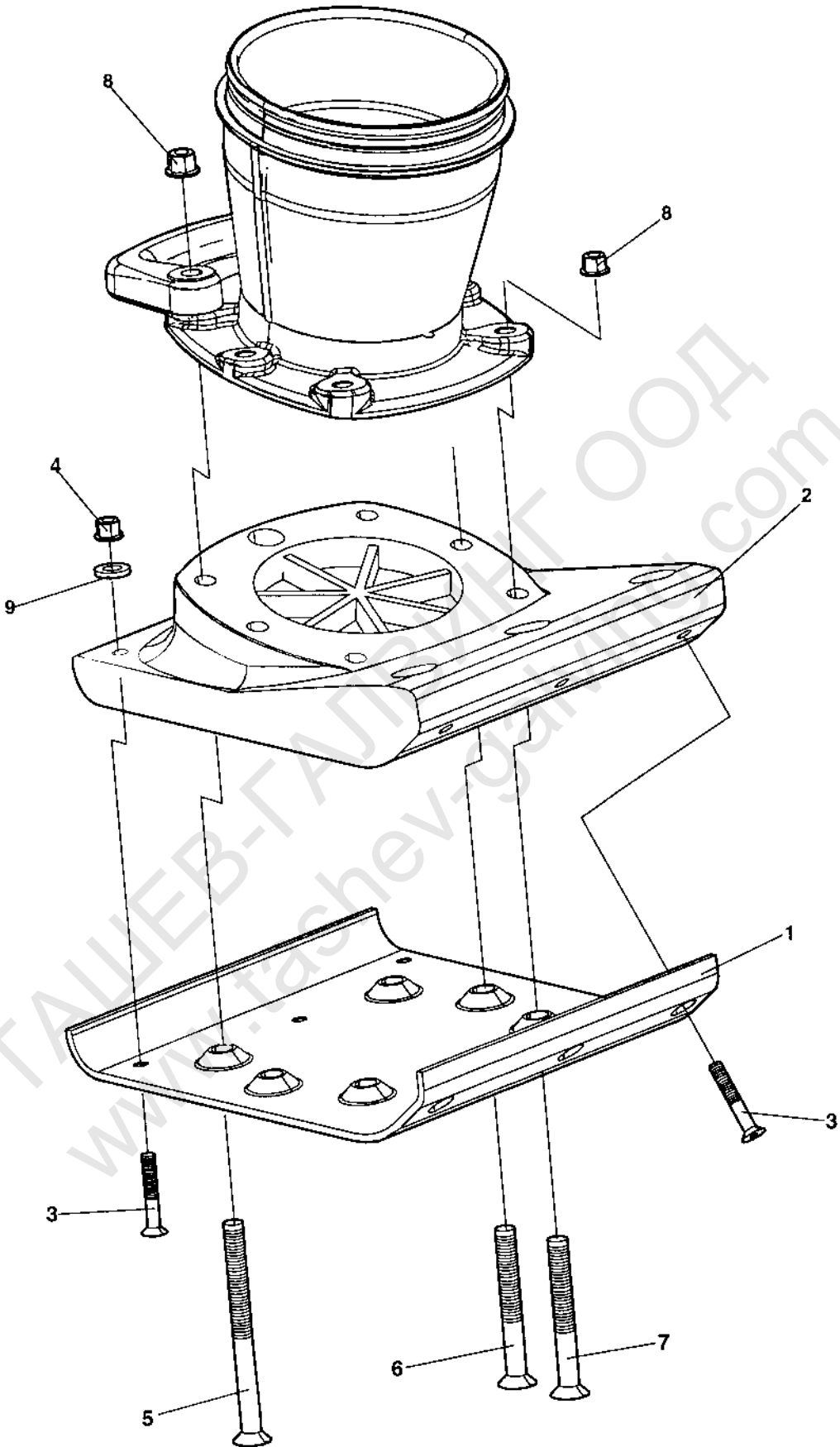
D)



Spring unit

Ref. No.	Part No.	Rem.	Qty	Description	Code
1		A	1	Crankshaft	
2	381482		2	Plug	
3	381479		1	Piston bolt	
4		B	1	Outer tube	
5	381961		1	Rod piston head	
6	383681		1	Lid	
7	380895		2	Spring	
8	380894		2	Spring	
9	380899		1	Stop	
10	383668		1	Rod piston	
11	380902		1	Stop	
12	283631		2	Hose clamp	
13	500023		2	Screw M8-1,25x40 8,8	
14	283686		1	Bellow	
15	508092		13	Screw M8-1,25x20H 8,8	
16	388409		1	Bellows support	
17	791395		1	Sight plug	
18	383666		1	Gasket	
19	383669		1	Inner tube	
20	384416		1	Handle	
21	904951		1	Plug	
22	160054		1	O-ring	
23	382369		1	Lid	
24	162009		6	Seal ring	D
25		C	6	Nut	D
26		C	1	Foot	D
27	791376		1	Fiber washer	

- A) See section transmission, item 3
 B) See section transmission, item 28
 C) See section foot
 D)

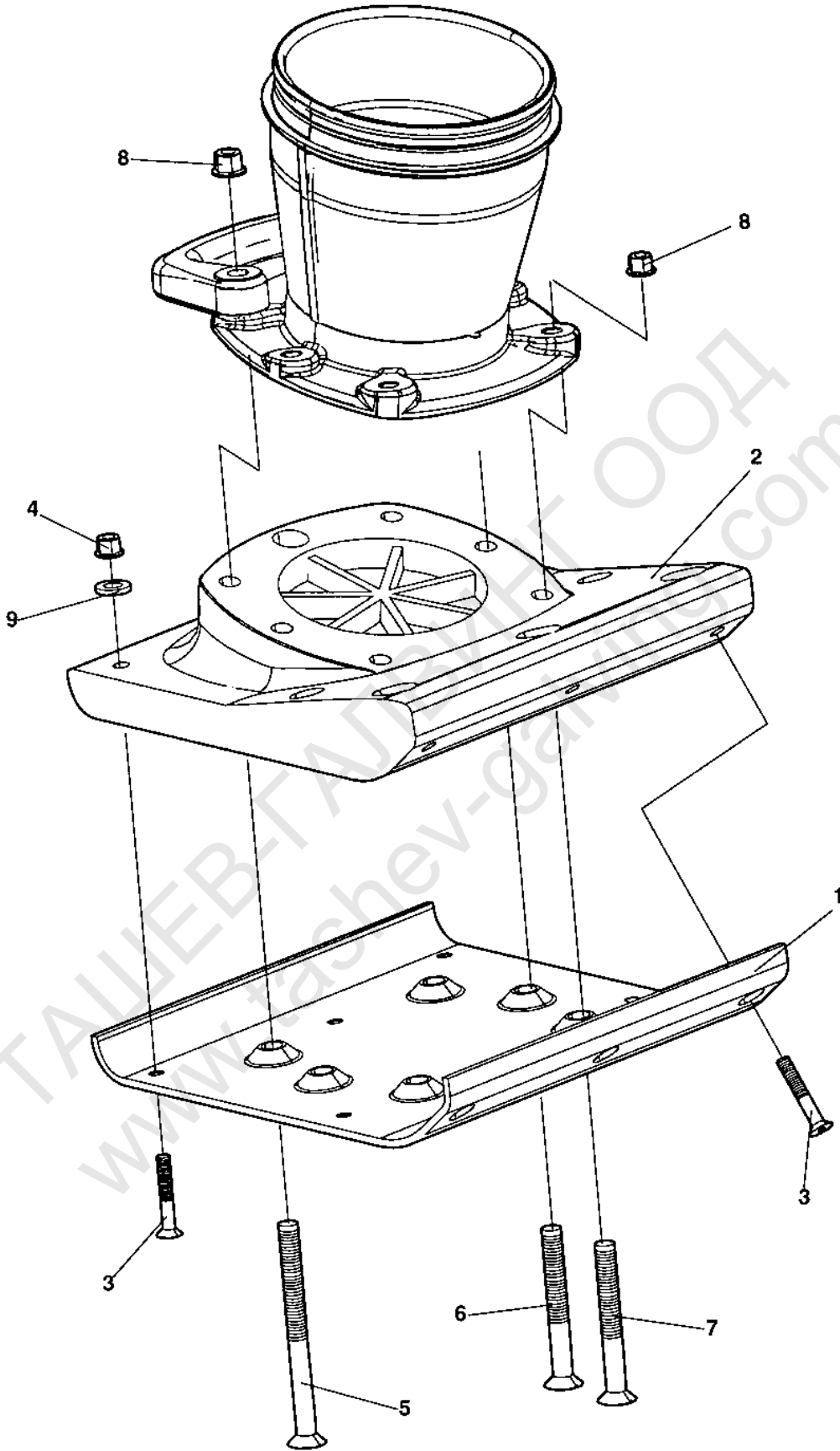


Foot 9 "

Ref. No.	Part No.	Rem.	Qty	Description	Code
1	382687		1	Ground plate	
2	382688	A	1	Foot	
3	791331		6	Screw	
4	902286		6	Lock nut M8	
5	791339		2	Screw	
6	791085		2	Screw	
7	791337		2	Screw	
8	902288		6	Nut M12	
9	904640		6	Washer 8,4x22x3	

A) Widht = 9"

ТАШЕВ-ГАЛВИНГ ООД
www.tashev-galving.com

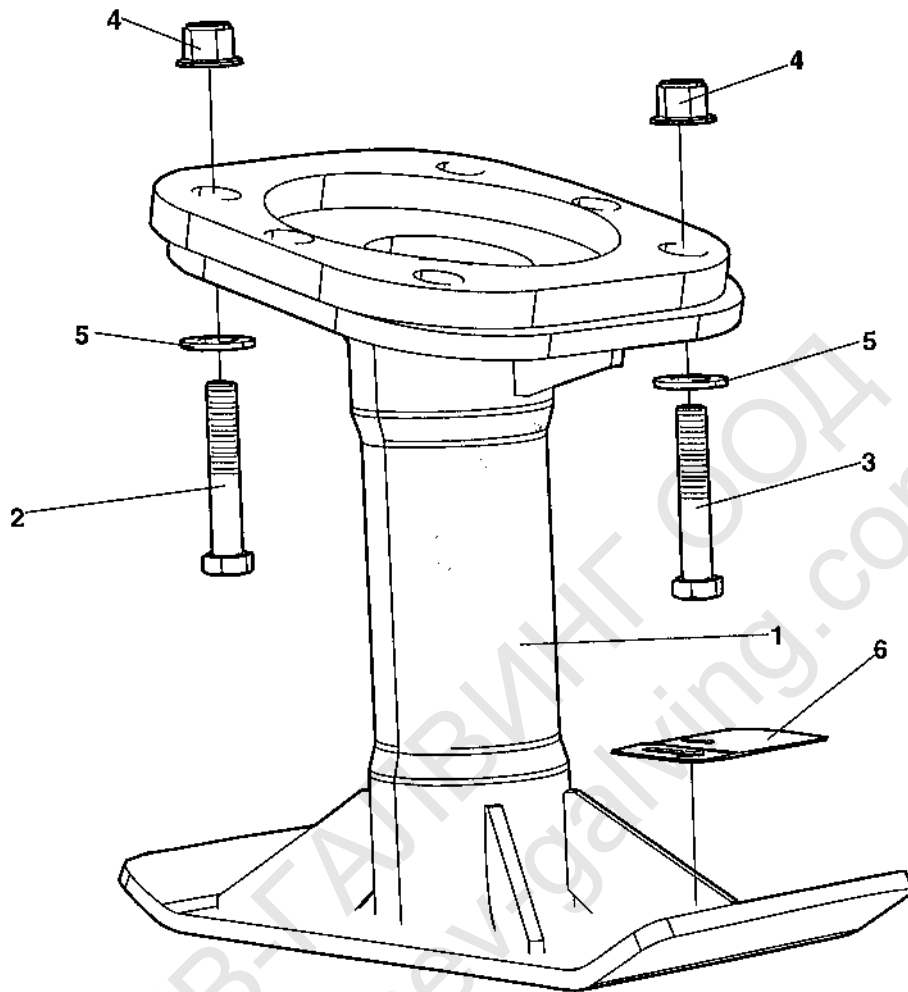


Foot 11"

Ref. No.	Part No.	Rem.	Qty	Description	Code
1	382371		1	Ground plate	
2	382366	A	1	Foot	
3	791331		8	Screw	
4	902286		8	Lock nut M8	
5	791339		2	Screw	
6	791085		2	Screw	
7	791337		2	Screw	
8	902288		6	Nut M12	
9	904640		7	Washer 8,4x22x3	

A) Widht = 11"

ТАШЕВ-ГАЛВИНГ ООД
www.tashev-galving.com



Option, extended foot

Ref. No.	Part No.	Rem.	Qty	Description	Code
1	389980		1	Extended foot	
2	928198		2	Screw	
3	903735		4	Screw M12x70 10,9	
4	902280		6	Side ring	
5	904231		6	Washer 13x24x2	
6	377125		1	Decal	

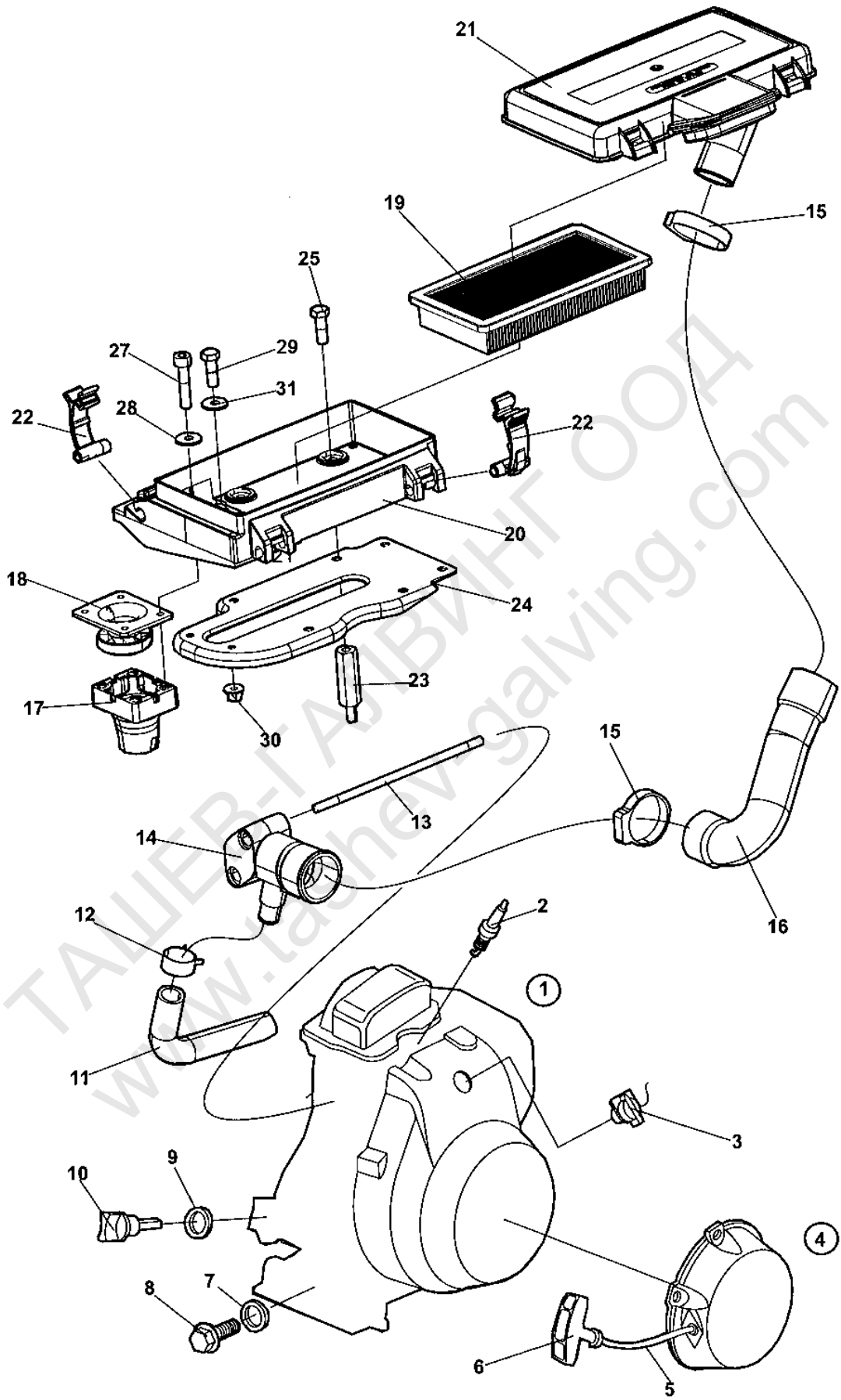
ТАШЕВ-ГАЛВИНГ ООД
www.tashev-galving.com

ТАШЕВ-ГАЛВИНГ ООД
www.tashev-galving.com

Engine and fuelsystem

Ref. No.	Part No.	Rem.	Qty	Description	Code
10				Engine Honda GX100 (Page 22)	
14				Diaphragm carburettor installation for GX100 (Page 24)	
15				Diaphragm carburettor with primer pump, installation for GX100 (Page 26)	
20				Fuel system (Page 28)	

ТАШЕВ-ГАЛВИНГ ООД
www.tashev-galving.com



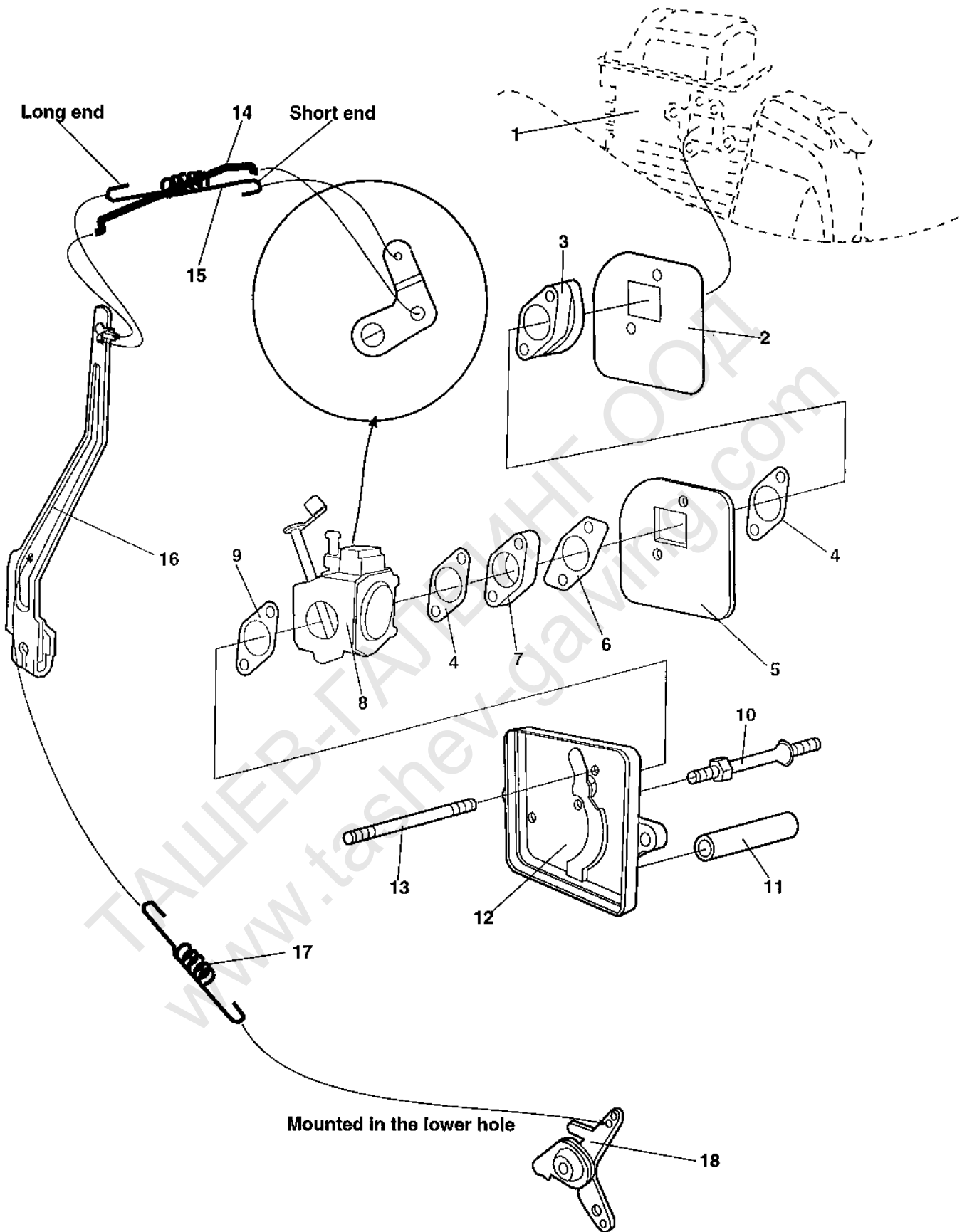
Engine Honda GX100

Ref. No.	Part No.	Rem.	Qty	Description	Code
1	389872		1	Engine, cpl Up to 76104783	
	379011		1	Engine, cpl From 76104784	
2	938934		1	.Spark plug	
3	938143		1	.Switch	
4	938972		1	.Recoil starter, cpl	
5	938973		1	..Rope	
6	938974		1	..Grip	
7	238303		2	.Gasket	D
8	238302		2	.Oil plug	D
9	938477		1	.Gasket	
10	938977		2	.Oil dipstick, cpl	
11	379490		1	Hose	D
12	792269		1	Hose clamp	D
13	945554		2	Stud	
14	379333		1	Hose connection	
15	792278		2	Hose clamp	
16	379489		1	Hose	
17	377180		1	Cyclone, housing	
18	377179		1	Cyclone	
19	377328		1	Air filter	
20	376853		1	Air filter housing	
21	377184		1	Cover	
22	377424		4	Clips	
23	378076		4	Spacer	
24	378032		1	Bracket	
25	500501		4	Screw	
27	508023		4	Screw	
28	601001		4	Washer	
29	500006		2	Screw M5x16	
30	902284		2	Nut M5	
31	904281		2	Washer 5,3x10x1	

D)

Diaphragm carburettor installation for GX100

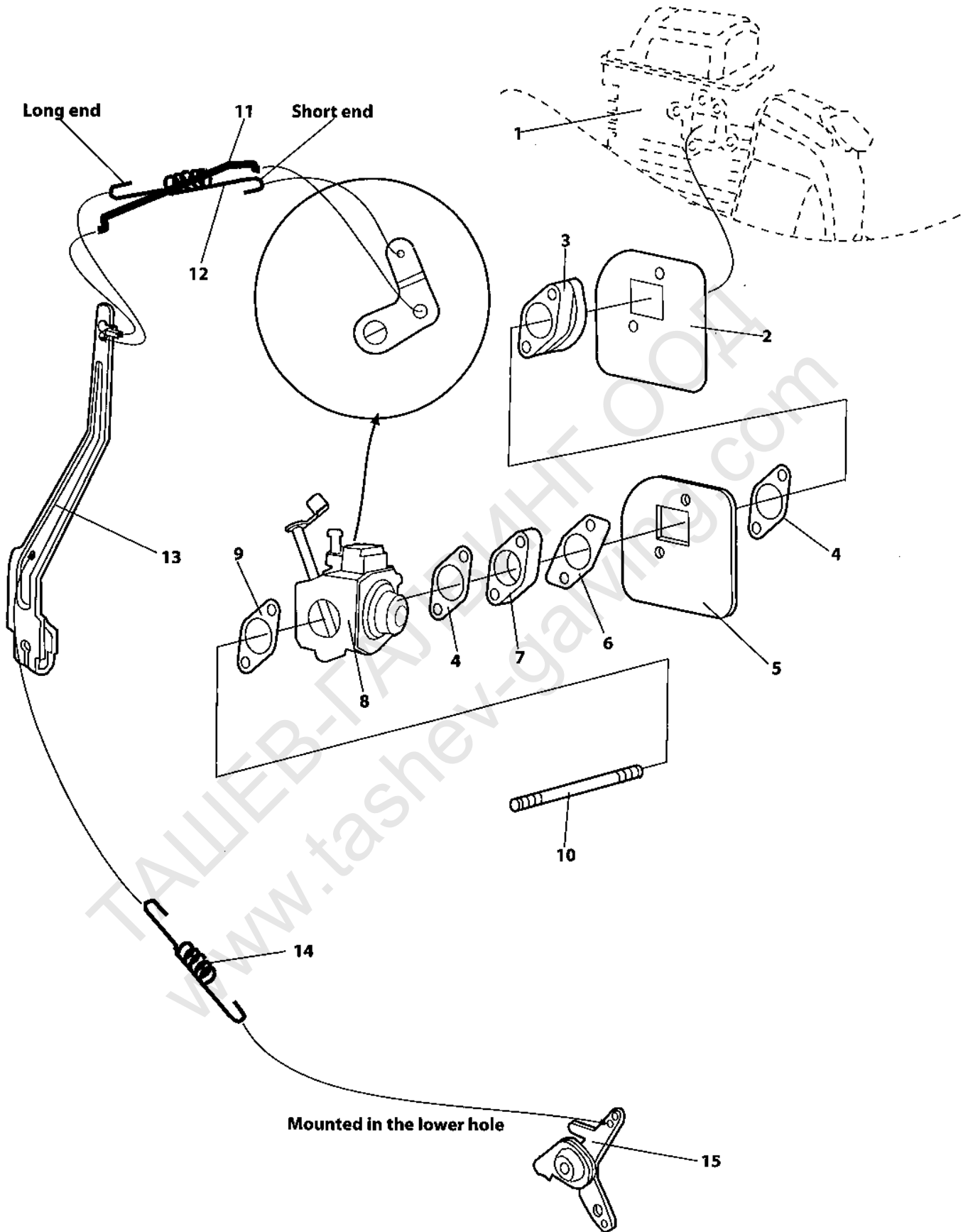
17944



Diaphragm carburettor installation for GX100

Ref. No.	Part No.	Rem.	Qty	Description	Code
1			1	Engine	
2	939857		1	Gasket	
3	939854		1	Spacer	
4	939856		2	Gasket	
5	939853		1	Plate	
6	939844		1	Gasket	
7	939855		1	Spacer	
8	939842		1	Carburettor	
9	939845		1	Gasket	
10	939848		1	Stud	
11	939843		1	Rubber hose	
12	939846		1	Air filter house	
13	939847		2	Stud	
14	939864		1	Rod	
15	939849		1	Spring	
16	939851		1	Control arm	
17	939850		1	Spring	
18			1	Control	
19			1		

ТАШЕВ-ГАЛВИНГ ООД
www.tashev-galving.com

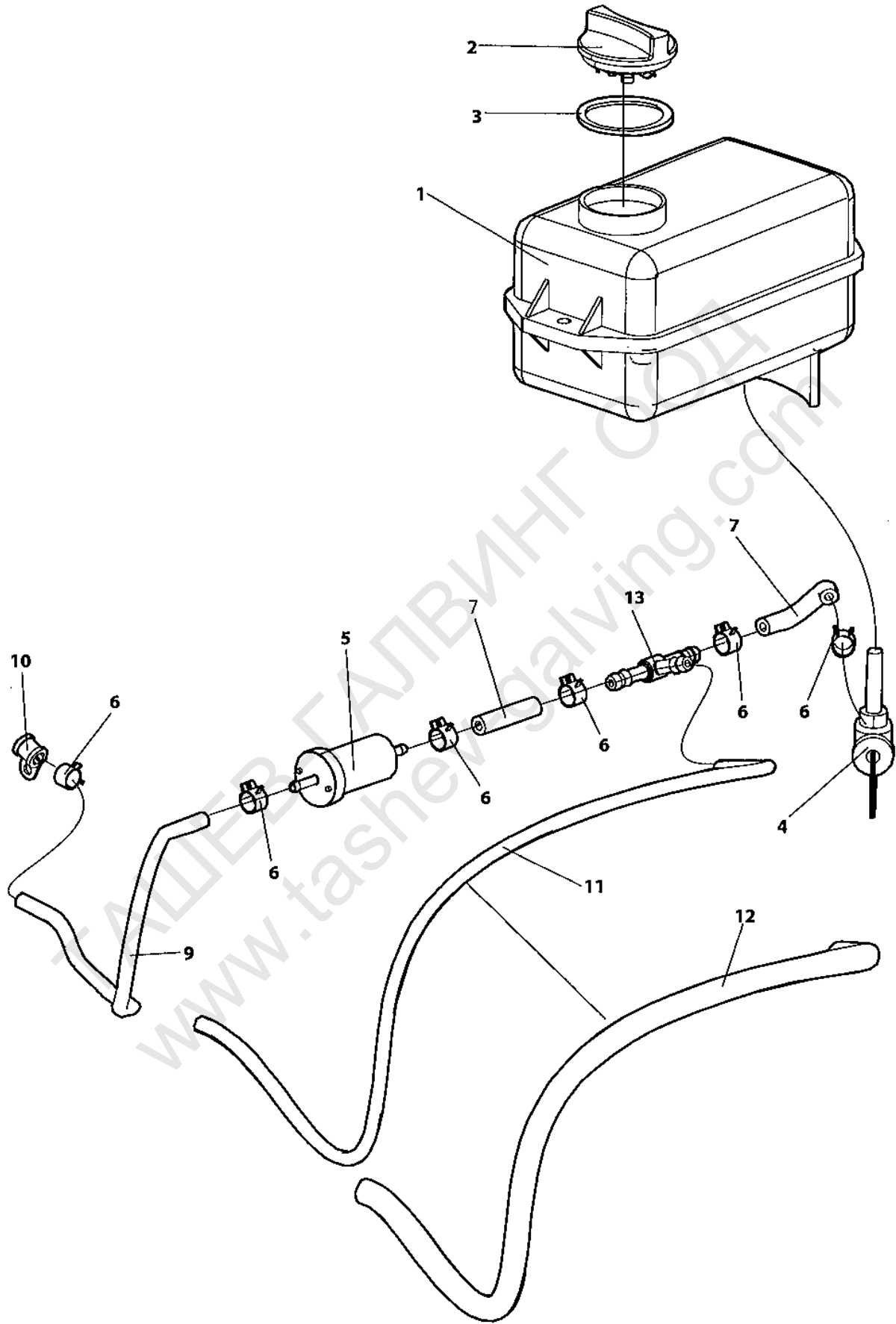


Diaphragm carburettor with primer pump, installation for GX100

Ref. No.	Part No.	Rem.	Qty	Description	Code
1			1	Engine	
2	939857		1	Gasket	
3	939854		1	Spacer	
4	939856		2	Gasket	
5	939853		1	Plate	
6	939844		1	Gasket	
7	945540		1	Spacer	
8	945499		1	Carburettor	
9	939845		1	Gasket	
10		A	1	Stud	
11	945539		1	Spring	
12	939852		1	Rod	
13	939851		2	Control arm	
14	939850		1	Spring	
15			1	Control	

A) See section engine

ТАШЕВ-ГАЛВИНГ ООД
www.tashev-galving.com



Fuel system

Ref. No.	Part No.	Rem.	Qty	Description	Code
1	283685		1	Tank	
2	389197		1	Filler cap	
3			1	Gasket	
4	283640		1	Fuel cock	
4-A	791577		1XL	Hose	
5	945502		1	Fuel filter	A
6	791574		6	Hose clamp	
7	791577		1XL	Hose	
9	791577		1XL	Hose	
10	921068		1	Clamp	
11			1XL	Hose From 76003001	
12	904212		1XL	Conduit From 76003001	
13	945547		1	T-connection From 76003001	

A)

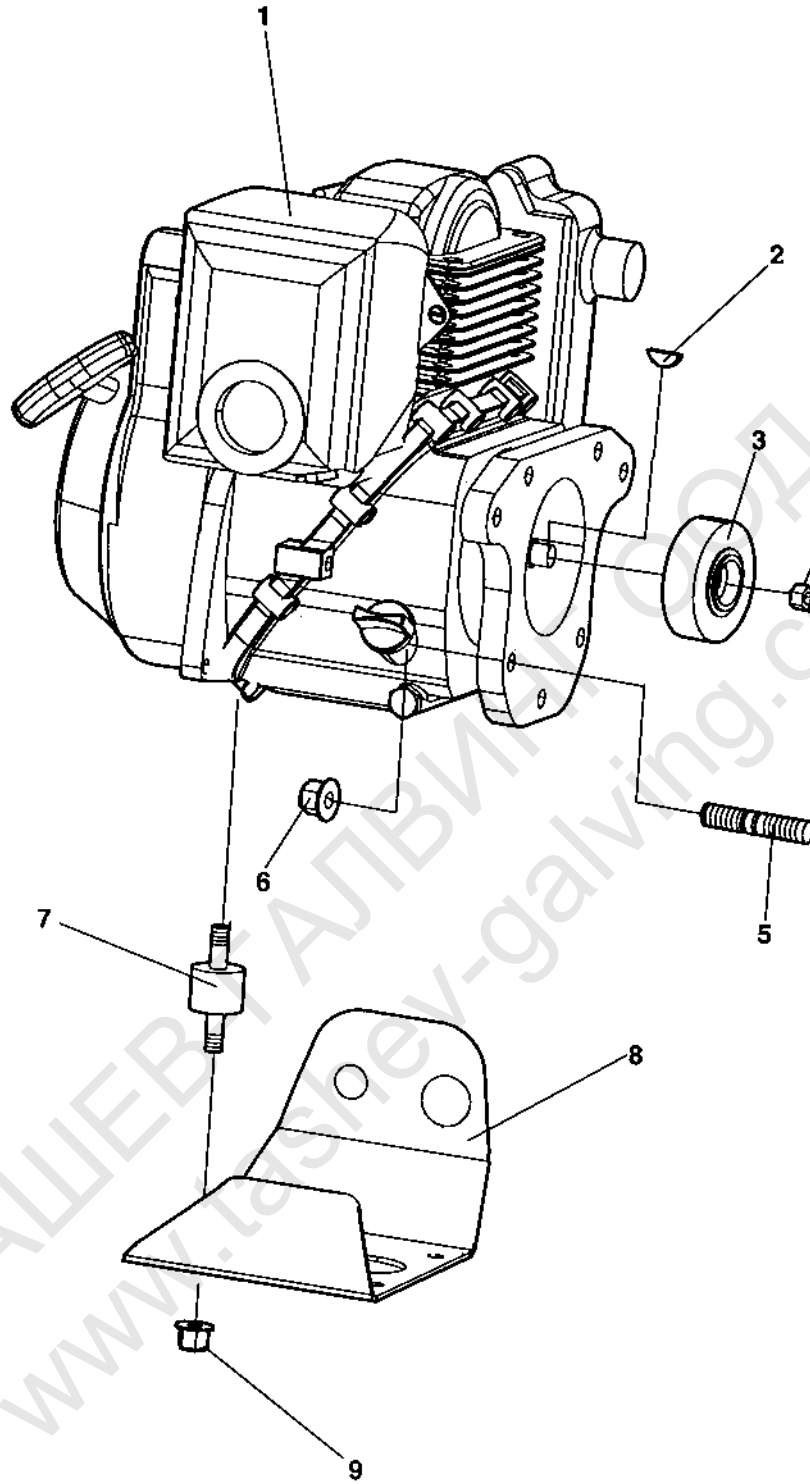
ТАШЕВ-ГАЛВИНГ ООД
www.tashev-galving.com

ТАШЕВ-ГАЛВИНГ ООД
www.tashev-galving.com

Power transmission

Ref. No.	Part No.	Rem. Qty	Description	Code
10			Engine installation (Page 32)	
20			Centrifugal clutch (Page 34)	

ТАШЕВ-ГАЛВИНГ ООД
www.tashev-galving.com



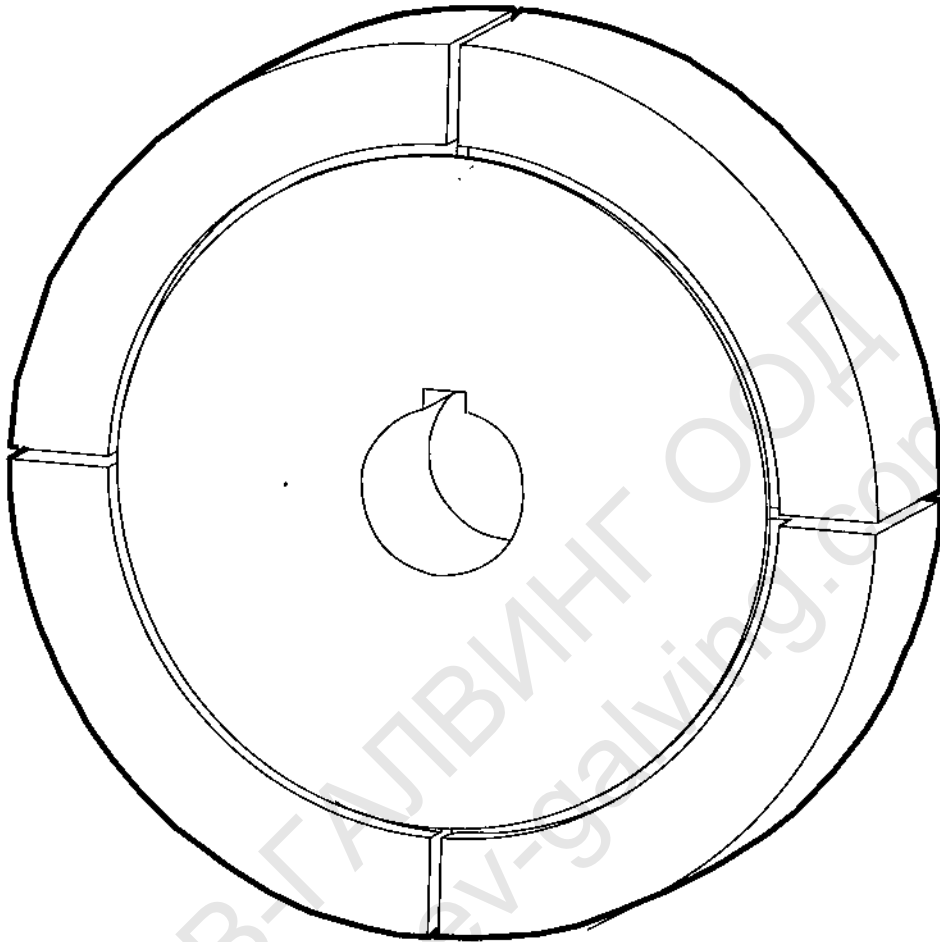
Engine installation

Ref. No.	Part No.	Rem.	Qty	Description	Code
1		A	1	Engine Honda GX100	
2	384992		1	Key	
3		B	1	Centrifugal clutch Up to S/N: 76002649	
4	900754		1	Nut	
5	384517		4	Stud	
6	792412		4	Nut M10	
7	791522		4	Shock absorber	
8	386655		1	Engine stay	
9	902286		4	Lock nut M8	

A) See section engine

B) See section clutch

ТАШЕВ-ГАЛВИНГ ООД
www.tashev-galving.com



Centrifugal clutch

Ref. No.	Part No.	Rem.	Qty	Description	Code
1	935696	A	1	Centrifugal clutch, cpl	
A)	Only available like complete unit				

ТАШЕВ-ГАЛВИНГ ООД
www.tashev-galving.com

ТАШЕВ-ГАЛВИНГ ООД
www.tashev-galving.com

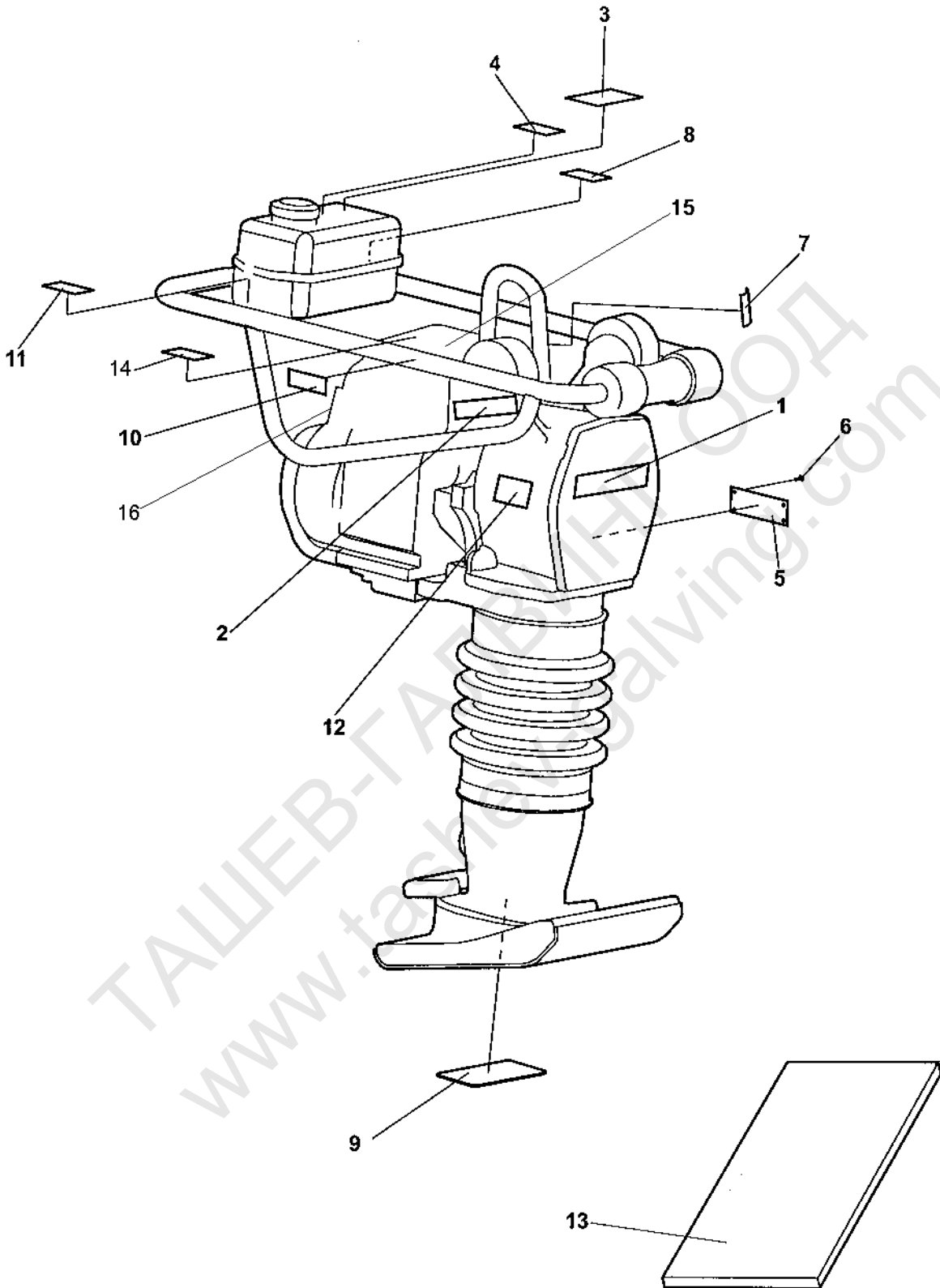
Decals and documentation

Ref. No.	Part No.	Rem.	Qty	Description	Code
----------	----------	------	-----	-------------	------

10

Decals and documentation (Page 38)

ТАШЕВ-ГАЛВИНГ ООД
www.tashev-galving.com



Decals and documentation

Ref. No.	Part No.	Rem.	Qty	Description	Code
1	386216			Plate "TREMIX"	
2	386336		2	Decal "MS620"	
3	386224		1	Decal	
	791351		4	Drive screw	
4			1	Not used on this model	
5			1	Product identification plate CE	
6	527002		4	Drive screw	
7	281269		2	Decal "LIFT"	
8			1	Not used on this model	
9	791088		1	Decal	
10	904366		2	Safety decal "Hot surface"	
11	385878		1	Decal	
12	791292		1	Decal "Sound power level" 104dB	
13			1	Documentation	
			1	.Instruction book, Honda Honda GX 100	
			1	.Operation IMS620	
			1	.Spare parts catalogue SMS620	
			1	.Warranty registration certificate	
			1	.CE declaration	
14	377862		1	Decal "Choke"	
16	379535		1	Instruction decal	

Part Number	Page	Part Number	Page	Part Number	Page
111078	11	386785	7	904952	11
150009	11	386786	7	921068	29
150014	11	386787	7	928198	19
151025	11	388403	11	935696	35
160035	11	388407	11	938143	23
160054	13	388409	13	938477	23
160106	11	389197	29	938934	23
162009	13	389872	23	938972	23
238302	23	389980	19	938973	23
238303	23	500006	23	938974	23
281269	39	500023	13	938977	23
283631	13	500501	7,23	939842	25
283640	29	500505	7	939843	25
283685	29	500506	7	939844	25,27
283686	13	508018	7	939845	25,27
376853	23	508023	23	939846	25
377125	19	508053	11	939847	25
377179	23	508092	13	939848	25
377180	23	508096	11	939849	25
377184	23	527002	39	939850	25,27
377328	23	586002	7	939851	25,27
377332	11	601001	23	939852	27
377424	23	628006	11	939853	25,27
377862	39	791085	15,17	939854	25,27
378032	23	791088	39	939855	25
378043	7	791292	39	939856	25,27
378076	23	791323	7	939857	25,27
379011	23	791331	15,17	939864	25
379333	23	791337	15,17	945499	27
379489	23	791339	15,17	945502	29
379490	23	791343	7	945539	27
379535	39	791344	7	945540	27
380894	13	791351	39	945547	29
380895	13	791376	13	945554	23
380899	13	791388	7		
380902	13	791395	13		
380906	11	791522	33		
380920	11	791574	29		
381477	11	791577	29		
381479	13	792269	23		
381482	13	792278	23		
381961	13	792412	33		
382366	17	900754	33		
382369	13	902041	7		
382371	17	902280	19		
382687	15	902284	7,23		
382688	15	902285	7		
383666	13	902286	7,15,17		
383668	13		33		
383669	13	902288	15,17		
383681	13	903520	11		
384416	13	903735	19		
384496	7	904212	29		
384517	33	904230	11		
384992	33	904231	19		
385006	7	904281	23		
385439	7	904366	39		
385878	39	904504	7		
386216	39	904640	15,17		
386224	39	904949	11		
386336	39	904950	11		
386655	33	904951	13		